

## C-X-C motif chemokine receptor 1 Stable Cell Line

**Catalog #:** CCL-CXCR1-4SH

**Description:** Tetracycline inducible recombinant human C-X-C motif chemokine receptor 1 (CXCR1) stable CHO adherent cell line

### Provided Material

---

<b>Cells</b>	2 x 1 mL frozen aliquots
<b>Format</b>	3.10 <sup>6</sup> cells/mL in freezing medium
<b>Shipping conditions</b>	Shipped on dry ice. Please ensure dry ice is still present in the package upon receipt
<b>Storage condition</b>	Store in liquid nitrogen (vapor phase) immediately upon receipt

### Product Informations

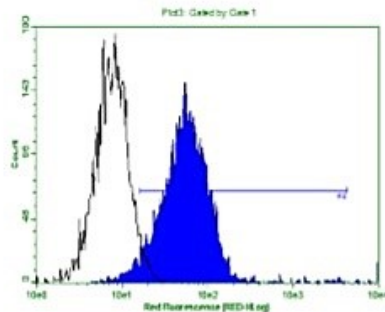
---

<b>Uniprot accession</b>	<a href="#">P25024</a>
<b>Cell line name</b>	H-CXCR1
<b>Receptor construct</b>	2*Twin-tag - TEV - CXCR1 - TEV - His
<b>Product description</b>	Human C-X-C chemokine receptor type 1 stable CHO-TREx cell line was established using Hygromycin at 150µg/mL. This monoclonal cell line were obtained by limit dilution allowing a homogeneous expression, assessed by flow cytometry (FACS) and confocal immuno-imaging
<b>Gene synonyms</b>	CMKAR1, IL8RA
<b>Receptor synonyms</b>	CXC-R1, CXCR-1, CDw128a, High affinity interleukin-8 receptor A (IL-8R A), IL-8 receptor type 1, CD_antigen: CD181

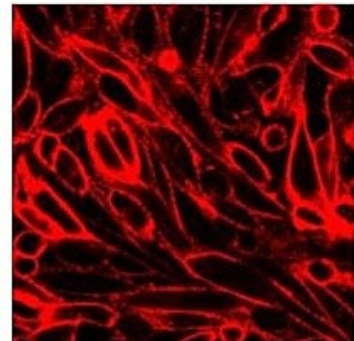
### Quality control

---

**Flow cytometry :** *Strep-Tactin Chromeo 488*



**Immuno staining :** *Strep-Tactin Chromeo 546*



**Stability**

The cells were kept in continuous culture for at least 60 days and showed no decrease of receptor expression level

**Mycoplasma**

This cell line was tested negative for mycoplasma (*Mycoplasma* detection kit – Lonza)

## Recommended culture conditions

---

### Thawing protocol

Remove the vial from liquid nitrogen tank and place it quickly in a 37 °C water-bath.

Just before the cells are completely thawed, decontaminate the outside of the vial with 70% ethanol and transfer the cells to a 15mL centrifuge tube containing 9mL of complete growth medium.

Pellet cells by centrifugation at 200 x g for 5 min, and discard the supernatant.

Resuspend the cells pellet with 5mL of the recommended complete growth medium and dispense into a 75cm<sup>2</sup> culture flask (T-75) containing 10mL of the same medium.

Incubate the culture at 37°C in a humidified atmosphere with 5% CO<sub>2</sub>.

**Grow medium**                DMEM F-12, 10% FBS, 7µg/mL Blastidin, 150µg/mL Hygromycin

**Freeze medium**            50% FBS, 40% DMEM F-12 and 10% DMSO

### Subculturing protocol

Remove and discard culture medium.

Wash cells with PBS (pH=7.4) to remove all traces of serum that contains trypsin inhibitor.

Add 3mL of 0.05% (w/v) Trypsin-EDTA solution to T-75 and observe the cells under an inverted microscope until cell layer is dispersed (usually 1 to 3 minutes).

Add 10 mL of complete growth medium and aspirate cells by gently pipetting, centrifuge the cells at 200 x g for 5min, and discard the supernatant.

Resuspend the cells in complete growth medium and add appropriate aliquots of the cell suspension to new culture vessels. A subcultivation ratio of 1:3 to 1:8 is recommended.

Incubate cultures at 37 °C in a humidified atmosphere with 5% CO<sub>2</sub>.

### Induction protocol

*Notes: Please split the cells at least 2 times after thawing them before starting the induction protocol. For optimal induction, cells must reach 70-80% confluence.*

Remove and discard culture medium.

Add an adequate volume of complete growth medium containing 2.5 µg/mL of Tetracycline.

Incubate the cells at 37°C in a humidified atmosphere with 5% CO<sub>2</sub> during 36h.

Before use check cells morphology.

## Materials

---

<i>Product Name</i>	<i>Provider</i>	<i>Cat.Ref</i>
DMEM F-12	Gibco	31331
FBS	Gibco	10270
Trypsin – EDTA (0.05%)	Gibco	25300
DPBS (without Ca <sup>2+</sup> , Without Mg <sup>2+</sup> )	Gibco	14190
Blasticidin	InvivoGen	ant-bl-1
Hygromycin	InvivoGen	ant-hg-1
Tetracycline	Sigma	T7660
DMSO	Sigma	D4540
Strep-Tactin Chromeo 488	lba	2-1542-050