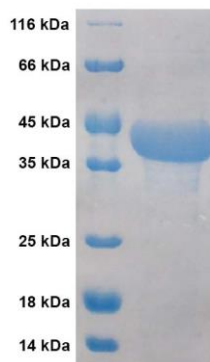


VlsE Protein (*Borrelia burgdorferi*)

CATALOG NUMBER: BB-UISE-005P, 50 µg

Introduction	VlsE is an outer surface lipoprotein of <i>Borrelia burgdorferi</i> that undergoes antigenic variation through an elaborate gene conversion mechanism and is thought to play a major role in the immune response to the Lyme disease borreliosis.
Applications	Western blot standard, antibody ELISA, antigen, etc.
Description	Recombinant protein purified from 293 cell culture
Viral Protein	6x His tagged VlsE protein (GenBank Accession No. U76405)
Storage	Store at -20 °C; Stable for 1-months from the date of shipment when kept at 4 °C. Non-hazardous, no MSDS required.
Concentration	1 µg/µl in PBS (20% glycerol, 0.1% sodium azide)
Purity	≥ 95% (by SDS PAGE)



SDS-PAGE: purified VlsE protein of *Borrelia burgdorferi* from 293 cells

VlsE SEQ:

HHHHHGS SQVADKDDPTNKFYQSVIQLGNGFLDVFTSFGGLVAEAFGFKSDPKKSDVKTYFTTTVAAKLEKTKTDLNSLPKEK
 SDISSTTGKPDSTGSGTAVEGAIKEVSELLDKLVKAVKTAEGASSGTAAIGEVVADADAADKADKASVKGIKGIKEIVEAA
 GGSEKLVKAVAAKGENNKGAGKLFKGAGAAAAGDSEAASKAAGAVSAVSGEQILSAIVTAADAAEQDGKKPEEAKNPIAAAIG
 DKDGGAEFGQDEMKKDDQIAAAIALRGMADGKFAVKDGEKEKAEGAIKGAAESAVRKVLGAIITGLIGDAVSSGLRKVGDSVK
 AASKETPPALNK

Reference:

1. Zhang, J.R., et al. Antigenic variation in Lyme disease borreliae by promiscuous recombination of VMP-like sequence cassettes. *Cell* 89: 275-285, 1997.