

HA (Y98F)(A/Brisbane/02/2018)(H1N1)

CATALOG NUMBER: IA-H1-B18WPm, 50 µg, 1 mg

Introduction

Influenza hemagglutinin (HA) is a type of hemagglutinin found on the surface of the influenza viruses. HA is an antigenic glycoprotein, like all other hemagglutinins, it causes red blood cells to agglutinate. HA is responsible for binding the virus to the cell that is being infected. HA proteins bind to cells with sialic acid on the membranes, such as cells in the upper respiratory tract or erythrocytes.

HA is a homotrimeric integral membrane glycoprotein. HA monomer is synthesized as a single polypeptide that is subsequently cleaved into two smaller polypeptides, the HA1 and HA2 subunits. Each HA monomer consists of a long, helical chain anchored in the membrane by HA2 and topped by a large HA1 globule.

Description

Viral protein purified from 293 cell culture

Viral Protein

Recombinant hemagglutinin (aa 18-530)(A/Brisbane/02/2018/H1N1)-pdm09-like produced in human 293 cells is a glycosylated polypeptide chain with amino acid change of Y98F, and having a C-terminal 6x his tag and an N-terminal c-Myc tag (GISAID accession#: EPI1312566)

Applications

Western blot standard, antibody ELISA, antigen, etc.

Storage

Store at -20 °C; Stable for 6-months from the date of shipment when kept at 4 °C. Non-hazardous. No MSDS required.

Concentration

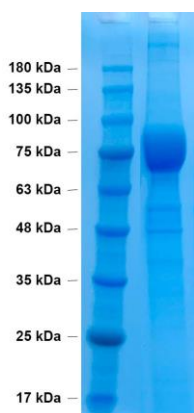
1 µg/µl in PBS

Endotoxin Level

<0.01 EU per 1 µg of the protein by LAL test

Purity

>95% pure by 12% SDS PAGE gel



SDS-PAGE: purified HA (Y98F)(aa 18-530)(A/Brisbane/02/2018/H1N1) protein

HA (Y98F)(aa 18-530)(A/Brisbane/02/2018/H1N1) Seq:

[EQKLI SEEDL](#)DTLCIGYHANNSTDTVDTVLEKNVTVTHSVNLLLEDKHNKGLCKLGGVAPLHLGKCNIA GWILGNPECESLSTARSWSYIVETSNSDNGT
 CYPGDFINFEELREQLSSVSSFERFEIFPKTSSWPNHDSNKGVTAAACPHAGAKSFYKNLIWL VKKGNSYPKLNQTYINDKGKEVLVLWGIHHPPTADQ
 QSLYQNADAYVVFVGTSTRYSKFKKPEIATRPKVRDREGRMNYWTLVLEPGDKITFEATGNLVVPRYAFTMERNAGSGIIISDTPVHDCNTTCQTAEGAIN
 TSLPFQNVHPVTIGKCPKYVKSTKLRLATGLRNVPSIQSRGLFGAIA GFIEGGWTGMVDGWYGYHHQNEQSGYAADLKSTQNAIDKITNKVNSVIEKM
 NTQFTAVGKEFNHLEKRIENLNKKVDDGFLDIWTYNAELLVLENERLTDYHDSNVKNLYEKVRNQLKNNAKEIGNGCFEFYHKCDNTCMESVKNGT
 YPKYSEEAKLNREKIDGVKLESTRIYQIHHHHHH