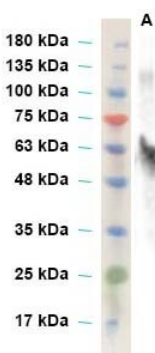


## Anti-Envelope (Zika Virus) Antibody (Rabbit Serum)

CATALOG NUMBER: ZV-E-0105, 100 µl

<b>Introduction</b>	Zika virus (ZIKV), a Flaviviridae family member, is a single-stranded, positive-sense RNA virus with a 10.7 Kb genome encoding a single polyprotein that is cleaved into three structural proteins: capsid (C), precursor of membrane (prM), envelop (E) and seven non-structural proteins: NS1, NS2A, NS2B, NS3, NS4A, NS4B, NS5. The flavivirus envelope (E) glycoprotein is responsible for virus entry and represents a major target of neutralizing antibodies for other flaviviruses.
<b>Applications</b>	WB (1: 1000-4000), ELISA, <i>etc.</i>
<b>Description</b>	Anti-envelope protein (Zika virus) polyclonal antibody, rabbit serum
<b>Immunogen</b>	Full length mammalian cell expressed recombinant envelope (E) protein (aa 1-504) of Zika virus (GenBank accession# AMA12087)
<b>Specificity</b>	React with E protein of Zika virus
<b>Storage</b>	Store at -20 °C; Stable for at least 1 month from the date of shipment at 4 °C.
<b>Size</b>	100 µl
<b>Usage</b>	This product does not contain livestock or poultry disease agents, non-toxic/non-contagious and is not intended for human use, only for laboratory research and development.



**Western blot:** primary antibody, anti-envelope (Zika virus) rabbit polyclonal antibody (1:2000 dilution); secondary antibody, HRP-conjugated goat anti-rabbit IgG (1:4000)  
A, full length envelope protein of Zika virus

### Reference:

1. Azevedo RS, et al. Zika virus epidemic in Brazil. I. Fatal disease in adults: Clinical and laboratorial aspects. J. Clin. Virol., 85: 56-64, 2016.