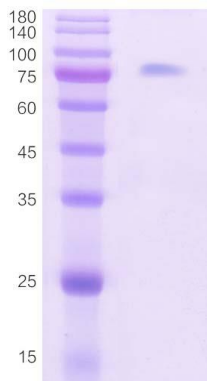


Recombinant Human ACE2 Protein

CATALOG NUMBER: hACE2-065P

Introduction	Angiotensin converting enzyme 2 (ACE2) is an enzyme attached to the outer surface (cell membranes) of cells in the lungs, arteries, heart, kidney, and intestines. ACE2 lowers blood pressure by catalysing the cleavage of angiotensin II (a vasoconstrictor peptide) into angiotensin (1-7) (a vasodilator). ACE2 also serves as the entry point into cells for some coronaviruses.
Applications	Western blot standard, ELISA, antigen, etc.
Description	Recombinant human ACE2 protein expressed and purified from HEK293 cells. The binding activity to SARS-CoV-2 spike RBD domain has been tested in a functional ELISA assay.
Viral Protein	Human ACE2 protein (amino acid 18-740)(GenBank No. Q9BYF1) with C-terminal his-tag
Storage	Store at -20 °C or -70 °C; Stable for two weeks from the date of shipment when kept at 4 °C.
Purification	Ion-exchange chromatography
Formulation	Lyophilized powder (1 mg/ml in PBS, pH7.4). Dissolve in 50 µl ddH ₂ O to make final concentration of 1 µg/µl.
Endotoxin Level	<1 EU per 1 µg of the protein by LAL test
Purity	≥ 90% (by SDS PAGE)



SDS-PAGE: purified recombinant human ACE2 protein

Human ACE2 Protein (aa 18-740) SQ:

QSTIEEQAKTFLDKFNHEAEDLFYQSSLASWNYNTNI TEENVQNMNAGDKWSAFLKEQSTLAQMYPLQEIQNLTVKLQLQALQQNGSSVLSEDKSKRL
 NTILNTMSTIYSTGKVCNPDNPQECLELLEPGLNEIMANSLDYNERLWAWESWRSEVVGKQLRPLYEYVVLKNEMARANHYEDYGDYWRGDYEVNGVDGY
 DYSRGQLIEDVEHTFEEIKPLYEHLHAYVRAKLMNAYPSYISPIGCLPAHLLGDMWGRFWTNLYSLTVPFQKPNIDVTDAMVDQAWDAQRIFKEAEKF
 FVSVGLPNMTQGFWENSMLTDPGNVQKAVCHPTAWDLGKGD FRI LMCTKVTMDDFLTAHHEMGHIQYDMAYAAQPFLLRNGANEGFHEAVGEIMSLSAA
 TPKHLKSI GLLSPDFQEDNETEINFLLKQALTI VGTLPFTYMLEKWRWVFKGEIPKDQWMKKWEMKREIVGVVEPVPHDETYCDPASLFHVSNDYSF
 IRYTRTLYQFQFQEAALCQAAKHEGPHLHKCDISNSTEAGQKLFNMLRLGKSEPWTALENVVGAKNMNRPLLNYFEPLFTWLKQNKNSFVGWSTDWS
 PYADQSIKVRISLKSALGDKAYEWNNDNEMYLFRSSVAYAMRQYFLKVKNQMILFGEEDVRVANLKPRI SFNFFVTAPKNVSDI I PRTEVEKAIRMSRSR
 INDAFRLNDNSLEFLGIQPTLGP PNQPPVS