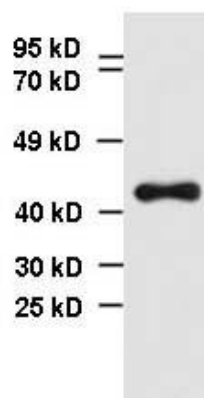


## Anti-HA Tag Mouse Monoclonal Antibody

CATALOG NUMBER: CB-H06m, 100 µg

<b>Introduction</b>	Epitope tags are short peptide sequences which are chosen because high-affinity antibodies can be reliably produced in many different species. These are usually derived from viral genes, which explain their high immunoreactivity. Epitope tags include V5-tag, c-myc-tag, and HA-tag. These tags are particularly useful for western blotting and immunoprecipitation experiments, although they also find use in antibody purification.
<b>Applications</b>	Western blot, ELISA, IP, may be used for other applications.
<b>Description</b>	Mouse anti-HA tag monoclonal antibody.
<b>Immunogen</b>	Synthesized HA tag peptide (YPYDVPDYA).
<b>Specificity</b>	Reacts with proteins with N or C-terminal HA tag sequence.
<b>Purification</b>	Protein A & Ion exchange column.
<b>Isotype</b>	Mouse IgG2b/kappa.
<b>Storage</b>	4 °C for short term (for long-term storage, keep at -20°C or -70°C). Non-hazardous.
<b>Concentration</b>	1 mg/ml in PBS.



**WB:** C-terminal HA tagged recombinant protein in transfected HEK293 whole cell lysate.