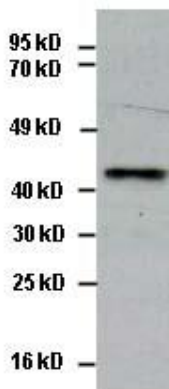


Rabbit Anti-HA Tag Polyclonal Antibody

CATALOG NUMBER: CB-H93r, 100 µg

Introduction	Epitope tags are short peptide sequences which are chosen because high-affinity antibodies can be reliably produced in many different species. These are usually derived from viral genes, which explain their high immunoreactivity. Epitope tags include V5-tag, c-myc-tag, and HA-tag. These tags are particularly useful for western blotting and immunoprecipitation experiments, although they also find use in antibody purification.
Applications	Western blot, ELISA, IP, may be used for other applications.
Description	Rabbit anti-HA tag polyclonal antibody.
Immunogen	Synthesized HA tag peptide (YPYDVPDYA).
Specificity	Reacts with proteins which contain N-terminal or C-terminal HA tag.
Purification	Immunoaffinity chromatography.
Isotype	IgG.
Storage	4 °C for short term (for long-term storage, keep at -20°C or -70°C). Non-hazardous.
Concentration	1 µg/µl.



WB: C-terminal HA tagged recombinant protein in transfected HEK293 whole cell lysate.