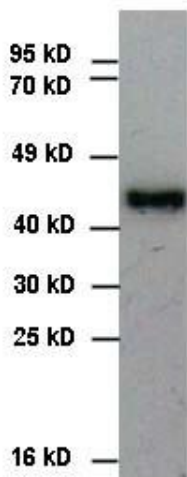


## Mouse Anti-c-Myc Monoclonal Antibody

Catalog Number: CB-M88m, 100 µg

<b>Introduction</b>	Epitope tags are short peptide sequences which are chosen because high-affinity antibodies can be reliably produced in many different species. These are usually derived from viral genes, which explain their high immunoreactivity. Epitope tags include V5-tag, c-myc-tag, and HA-tag. These tags are particularly useful for western blotting and immunoprecipitation experiments, although they also find use in antibody purification.
<b>Description</b>	Mouse anti-human c-Myc monoclonal antibody.
<b>Applications</b>	Western blot, ELISA, IP, IF, other applications not tested.
<b>Immunogen</b>	Synthetic peptides (EQKLISEEDL).
<b>Specificity</b>	Recognize c-Myc protein or recombinant proteins with N-terminal or C-terminal c-Myc tag (EQKLISEEDL).
<b>Purification</b>	Protein A chromatography.
<b>Isotype</b>	IgG1
<b>Storage</b>	4 °C for short term (for long-term storage, keep at -20°C or -70°C). Non-hazardous
<b>Concentration</b>	1 µg/µl.



WB, c-Myc-tag conjugated recombinant protein in transfected HEK293 whole cell lysate.