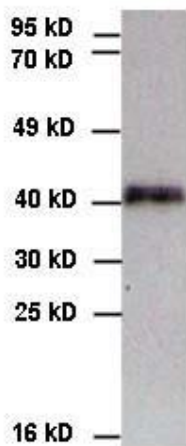


## Rabbit Anti-c-Myc Polyclonal Antibody

Catalog Number: CB-M89r, 100 µg

|                      |  |
|----------------------|--|
| <b>Introduction</b>  | Epitope tags are short peptide sequences which are chosen because high-affinity antibodies can be reliably produced in many different species. These are usually derived from viral genes, which explain their high immunoreactivity. Epitope tags include V5-tag, c-myc-tag, and HA-tag. These tags are particularly useful for western blotting and immunoprecipitation experiments, although they also find use in antibody purification. |
| <b>Description</b>   | Rabbit anti-human c-Myc polyclonal antibody.   |
| <b>Applications</b>  | Western blot, ELISA, IP, other applications not tested.  |
| <b>Immunogen</b>     | Synthetic peptides (EQKLISEEDL).   |
| <b>Specificity</b>   | Recognize c-Myc protein or recombinant proteins with N-terminal or C-terminal c-Myc tag (EQKLISEEDL).  |
| <b>Purification</b>  | Protein A chromatography.  |
| <b>Isotype</b>       | IgG1   |
| <b>Storage</b>       | 4 °C for short term (for long-term storage, keep at -20°C or -70°C). Non-hazardous   |
| <b>Concentration</b> | 1 µg/µl.   |



WB, c-Myc-tag conjugated recombinant protein in transfected HEK293 whole cell lysate.