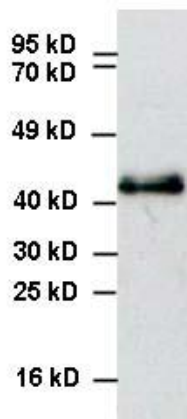


Anti-V5 Rabbit Polyclonal Antibody

Catalog Number: CB-V95r, 100 µg

Introduction	Epitope tags are short peptide sequences which are chosen because high-affinity antibodies can be reliably produced in many different species. These are usually derived from viral genes, which explain their high immunoreactivity. Epitope tags include V5-tag, c-myc-tag, and HA-tag. These tags are particularly useful for western blotting and immunoprecipitation experiments, although they also find use in antibody purification.
Description	Rabbit anti-V5 tag polyclonal antibody.
Applications	Western blot, ELISA, IHC, and IP, may be used for other applications.
Immunogen	Synthesized peptide (GKPIPPLLGLDST) from the C-terminal sequence of the P and V proteins of Simian Virus 5.
Specificity	Recognizes recombinant proteins with V5 peptide sequence at either N or C-terminus.
Purification	Protein G/A immunoaffinity chromatography.
Isotype	Rabbit IgG.
Storage	Store at 4 °C; Stable for at least 6 months from the date of shipment. Non-hazardous. For long-term storage, keep at -20 °C.
Concentration	1 µg/µl.



WB, recombinant protein with V5-tag in transfected HEK293 whole cell lysate.

