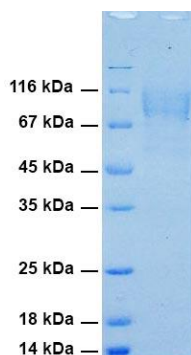


## gp120 (ADA) (Clade B)

CATALOG NUMBER: IV-0023-005P, 50 µg

<b>Introduction</b>	Envelope glycoprotein GP120 (or gp120) is a glycoprotein exposed on the surface of the HIV envelope. The 120 in its name comes from its molecular weight of 120. Gp120 is essential for virus entry into cells as it plays a vital role in attachment to specific cell surface receptors. These receptors are DC-SIGN, Heparan Sulfate Proteoglycan and a specific interaction with the CD4 receptor, particularly on helper T-cells. Binding to CD4 induces the start of a cascade of conformational changes in gp120 and gp41 that lead to the fusion of the viral with the host cell membrane. Binding to CD4 is mainly electrostatic although there are van der Waals interactions and hydrogen bonds.
<b>Applications</b>	Western blot standard, antibody ELISA, HIV-1 entry inhibition, etc.
<b>Description</b>	Viral protein expressed and purified from 293 cell culture
<b>Viral Protein</b>	C-terminal 6xHis tagged HIV-1 gp120 (ADA) (Clade B) protein (amino acid 34-518) (GenBank No. M60472).
<b>Storage</b>	Store at -20 °C; Stable for 3-months from the date of shipment when kept at 4 °C. Non-hazardous. No MSDS required.
<b>Endotoxin Level</b>	<0.01 EU per 1 µg of the protein by LAL test
<b>Concentration</b>	1 mg/ml in PBS
<b>Purity</b>	≥ 95% purity (SDS PAGE)



**SDS-PAGE (12%):** Purified HIV-1 gp120 (ADA) (Clade B) protein

### HIV-1 gp120 (ADA)(Clade B) Protein SEQ:

WVTVYYGVVWKEATTLFCASDAKAYDTEVHNVWATHACVPTDPNPQEVVLENVTFENFNMWKNMVEQMHEDIISLWDQSLKPCVKLTPLCRTLNC  
 LRNVTNINNSSEGMRGEIKNCSFNITTSIRDKVKDYALFYRLDVVPIDNDNTSYRLINCNTSTITQACPKVSFEPIPIHYCTPAGFAILKCKDKKFNG  
 TGPCKNVSTVQCTHGIRPVVSTQLLLNGSLAEEVIRSSNFTDNAKNIIVQLKESVEINCRPNNTNRKSIHIGPGRAFYTTGEIIGDIRQAHCNISR  
 TKWNTLNQIATKLKEQFGNNKTIIVFNQSSGGDPEIVMHSFNCGGEFFYCNSTQLFNSTWNFNGTWNLTSNGTEGNDTITLPCRICKQIINMWQEVGKA  
 MYAPPPIRGQIRCSSNITGLILTRDGGTNSGSEIFRPGGGDMRDNRSELYKYKVVVKIEPLGVAPTAKRRRVQREKRAVGTIGAMFLGHHHHHH