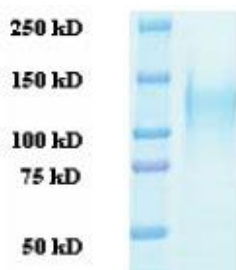


## gp120 (Du172.17) (HIV-1/Clade C)

CATALOG NUMBER: IV-RC2-005P, 50 µg

<b>Introduction</b>	Envelope glycoprotein GP120 (or gp120) is a glycoprotein exposed on the surface of the HIV envelope. gp120 is essential for virus entry into cells as it plays a vital role in seeking out specific cell surface receptors for entry. Three gp120s, bound as heterodimers to a transmembrane glycoprotein, gp41, are thought to combine in a trimer to form the envelope spike, which is involved in virus-cell attachment.
<b>Applications</b>	Western blot standard, antibody ELISA, immunogen, etc.
<b>Description</b>	Viral protein purified from 293 cell culture.
<b>Viral Protein</b>	C-terminal 6xHis tagged HIV-1 gp120 (Du172.17) (Clade C) protein (amino acid 40-508) (GenBank No. DQ411853).
<b>Storage</b>	Store at -20 °C; Stable for 6-months from the date of shipment when kept at 4 °C. Non-hazardous. No MSDS required.
<b>Concentration</b>	1 mg/ml in PBS.
<b>Specificity</b>	≥ 95% purity (SDS PAGE).



**SDS-PAGE:** purified HIV-1 gp120 (Du172.17) (Clade C) protein