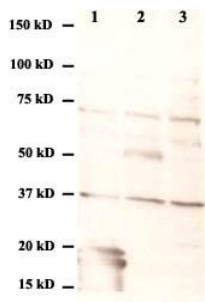


## Anti-E (West Nile Virus) Antibody

CATALOG NUMBER: WNV-E-001, 100 µl

<b>Introduction</b>	West Nile virus (WNV) is a virus of the family Flaviviridae part of the Japanese encephalitis (JE) antigenic complex of viruses. Image reconstructions and cryoelectron microscopy reveal a 45-50 nm virion covered with a relatively smooth protein surface. This structure is similar to virus; both belong to the genus flavivirus within the family Flaviviridae. WNV is a positive-sense, single strand of RNA, it is between 11,000 and 12,000 nucleotides long which encode seven non-structural proteins (NS1, NS2a, NS3, NS4a, NS4b, and NS5) and three structural proteins (capsid (C), membrane (M or preM), and envelope (E)). The RNA strand is held within a nucleocapsid formed from 12 kDa protein blocks; the capsid is contained within a host-derived membrane altered by two viral glycoproteins.
<b>Applications</b>	Western blot, antibody ELISA, etc.
<b>Description</b>	Rabbit polyclonal antibody
<b>Immunogen</b>	<i>in vivo</i> expressed full-length envelope (E) protein of West Nile virus (GenBank No. NC_009942)
<b>Specificity</b>	Reacts with E protein or its subdomain (DIII) of West Nile virus
<b>Storage</b>	Store at -20 °C; Stable for 6-months from the date of shipment when kept at 4 °C. Non-hazardous. No MSDS required.
<b>Size</b>	100 µl of rabbit sera with 0.1% sodium azide.



**WB:**

- 1, 293 cell expressing E (DIII) protein of West Nile virus
- 2, 293 cell expressing E protein of West Nile virus
- 3, 293 cell extract control