

West Nile Virus NS1 Protein

CATALOG NUMBER: WNV-NS-053P, 50 µg

Introduction

West Nile virus (WNV) is a virus of the family Flaviviridae part of the Japanese encephalitis (JE) antigenic complex of viruses. Image reconstructions and cryoelectron microscopy reveal a 45-50 nm virion covered with a relatively smooth protein surface. This structure is similar to virus; both belong to the genus flavivirus within the family Flaviviridae. WNV is a positive-sense, single strand of RNA, it is between 11,000 and 12,000 nucleotides long which encode seven non-structural proteins (NS1, NS2A, NS2B, NS3, NS4A, NS4B, NS5) and three structural proteins (Capsid protein, PreM protein, Envelope protein). The RNA strand is held within a nucleocapsid formed from 12 kDa protein blocks; the capsid is contained within a host-derived membrane altered by two viral glycoproteins.

Applications

Western blot standard, antibody-ELISA, antigen, etc.

Description

Viral protein produced in HEK 293 cells

Viral Protein

C-terminal 6xHis tagged full-length non-structural protein 1(NS1+V5) of West Nile virus (GenBank No. EU081844.1)

Storage

Store at -20 °C; Stable for 6-months from the date of shipment when kept at 4 °C. Non-hazardous. No MSDS required.

Concentration

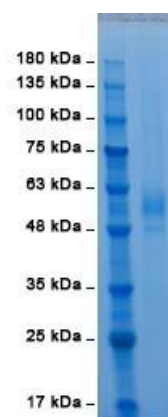
1 µg/µl in PBS

Endotoxin Level

<0.01 EU per 1 µg of the protein by LAL test

Specificity

≥ 90% purity (SDS PAGE)



SDS-PAGE: NS1 protein (West Nile Virus)

NS1 PROTEIN SEQ:

```
DTGCAIDISR QELRCGSGVF IHNDVEAWMD RYKYYPETPQ GLAKIIQKAH KEGVCGLRSV SRLEHQMWEA VKDELNTLLK ENGVDLSVVV
EKQEGMYKSA PKRLTATTEK LEIGWKAWGK SILFAPELAN NTFVVDGPET KECPTQNRW NSLEVEDFGF GLTSTRMFLK VRESNTTECD
SKIIGTAVKN NLAIHSDLSY WIESRLNDTW KLERAVLGEV KSCTWPETHL LWGEGILESD LIIPVTLAGP RSNHNRRPGY KTQNQGPWDE
GRVEIDFDYC PGTTVTLSSE CGHRGPATRT TTESGKLITD WCCRSTLPP LRYQTDSCGW YGMEIRPQRH DEKTLVQSQV NA
GKPIPNLLGLDSTHHHHH
```

