

Anti-CD2 Antibody, Mouse Monoclonal

Catalog Number: CB-C059m, 100 µg

Introduction CD2 (cluster of differentiation 2) is a cell adhesion molecule found on the surface of T cells and natural killer (NK) cells. It has also been called T-cell surface antigen T11/Leu-5, LFA-2, LFA-3 receptor, erythrocyte receptor and rosette receptor.

It interacts with other adhesion molecules, such as lymphocyte function-associated antigen-3 (LFA-3/CD58) in humans, or CD48 in rodents, which are expressed on the surfaces of other cells. In addition to its adhesive properties, CD2 also acts as a co-stimulatory molecule on T and NK cells.

CD2 is a specific marker for T cells and NK cells, and can therefore be used in immunohistochemistry to identify the presence of such cells in tissue sections. The great majority of T cell lymphomas and leukaemias also express CD2, making it possible to use the presence of the antigen to distinguish these conditions from B cell neoplasms.

Description Mouse monoclonal antibody.

Applications Western blot and IHC, may be used for other applications.

Immunogen Recombinant protein encoding external domain of human CD2.

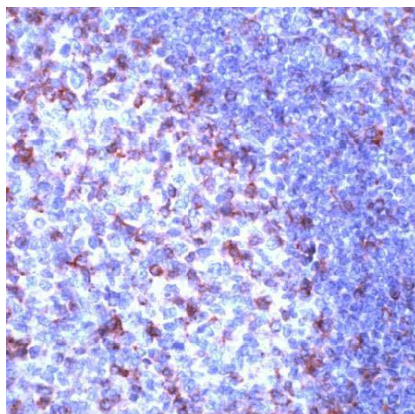
Specificity Recognizes CD2 from human, other species not tested.

Purification Immunoaffinity chromatography.

Isotype IgG.

Storage Store at 4 °C; Stable for at least 6 months from the date of shipment. Non-hazardous. For long-term storage, keep at -20 °C.

Concentration 1 µg/µl.



IHC staining of paraffin embedded sections of human tonsils.