

Anti-CD10 Antibody, Mouse Monoclonal

Catalog Number: CB-C068m, 100 µg

Introduction CD10 is a cell surface enzyme with neutral metalloendopeptidase activity. CD10 is also known as CALLA (common acute lymphocytic leukemia antigen), Neprilysin, membrane metallo-endopeptidase, or neutral endopeptidase (NEP). It serves as a marker for the common form of ALL (acute lymphocytic leukemia) as well as for Burkitt lymphoma and follicular germinal center lymphoma. CD10/CALLA is normally present on the surface of early lymphoid cells as well as on a number of other types of normal cells, such as especially cells in the kidney.

Thermolysin-like specificity, but is almost confined on acting on polypeptides of up to 30 amino acids. Biologically important in the destruction of opioid peptides such as Met- and Leu-enkephalins by cleavage of a Gly-Phe bond. Able to cleave angiotensin-1, angiotensin-2 and angiotensin 1-9. Involved in the degradation of atrial natriuretic factor (ANF). Displays UV-inducible elastase activity toward skin preelastic and elastic fibers.

Description Mouse monoclonal antibody.

Applications Western blot and IHC, may be used for other applications.

Immunogen Recombinant protein from the extracellular domain of human CD10.

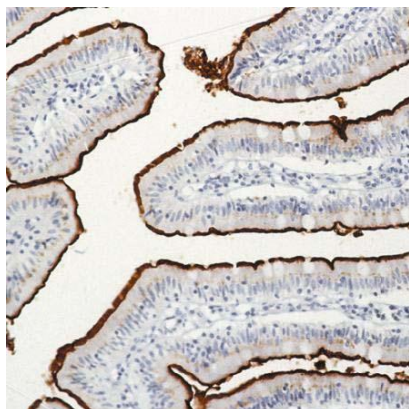
Specificity Recognizes CD10 from human, rat, other species not tested.

Purification Immunoaffinity chromatography.

Isotype IgG.

Storage Store at 4 °C; Stable for at least 6 months from the date of shipment. Non-hazardous. For long-term storage, keep at -20 °C.

Concentration 1 µg/µl.



IHC staining of paraffin embedded sections of human intestinal tissue.