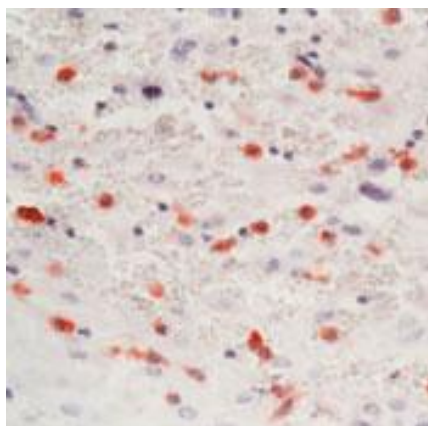


Anti-CD14 Antibody, Mouse Monoclonal

Catalog Number: CB-C069m, 100 µg

Introduction	<p>Cluster of differentiation 14 also known as CD14 is a human gene.</p> <p>The protein encoded by this gene is a component of the innate immune system. CD14 exists in two forms. Either it is anchored into the membrane by a glycosylphosphatidylinositol tail (mCD14) or it appears in a soluble form (sCD14). Soluble CD14 either appears after shedding of mCD14 (48 KDa) or is directly secreted from intracellular vesicles (56 KDa).</p> <p>CD14 acts as a co-receptor (along with the Toll-like receptor TLR 4 and MD-2) for the detection of bacterial lipopolysaccharide (LPS).[4][5] CD14 can bind LPS only in the presence of lipopolysaccharide-binding protein (LBP). Although LPS is considered its main ligand, CD14 also recognizes other pathogen-associated molecular patterns.</p>
Description	Mouse monoclonal antibody.
Applications	Western blot and IHC, may be used for other applications.
Immunogen	Recombinant protein from the extracellular domain of human CD14.
Specificity	Recognizes CD14 from human, other species not tested.
Purification	Immunoaffinity chromatography.
Isotype	IgG.
Storage	Store at 4 °C; Stable for at least 6 months from the date of shipment. Non-hazardous. For long-term storage, keep at -20 °C.
Concentration	1 µg/µl.



IHC staining of paraffin embedded tissue sections of human placenta.