

Anti-JMJD2A/KDM4A Monoclonal Antibody

Catalog Number: CE-J075m, 100 µg

Introduction	<p>Lysine-specific demethylase 4A is an enzyme that in humans is encoded by the KDM4A gene.</p> <p>This gene is a member of the Jumonji domain 2 (JMJD2) family and encodes a protein with a JmjN domain, a JmjC domain, a JD2H domain, two TUDOR domains, and two PHD-type zinc fingers. This nuclear protein functions as a trimethylation-specific demethylase, converting specific trimethylated histone residues to the dimethylated form, and as a transcriptional repressor.</p> <p>Other names used: JHDM3A, JMJD2, KIAA0677.</p>
Description	Mouse monoclonal antibody.
Applications	IF (1:100-500), may be used for other applications.
Immunogen	Synthetic peptide corresponding to N-terminal residues of human JMJD2A (Genebank Accession No. NP_055478).
Specificity	Recognizes endogenous levels of human JMJD2A protein.
Purification	Immunoaffinity chromatography.
Isotype	IgG.
Storage	Store at 4 °C; Stable for at least 6 months from the date of shipment. Non-hazardous. For long-term storage, keep at -20 °C.
Concentration	1 µg/µl.

Application data:

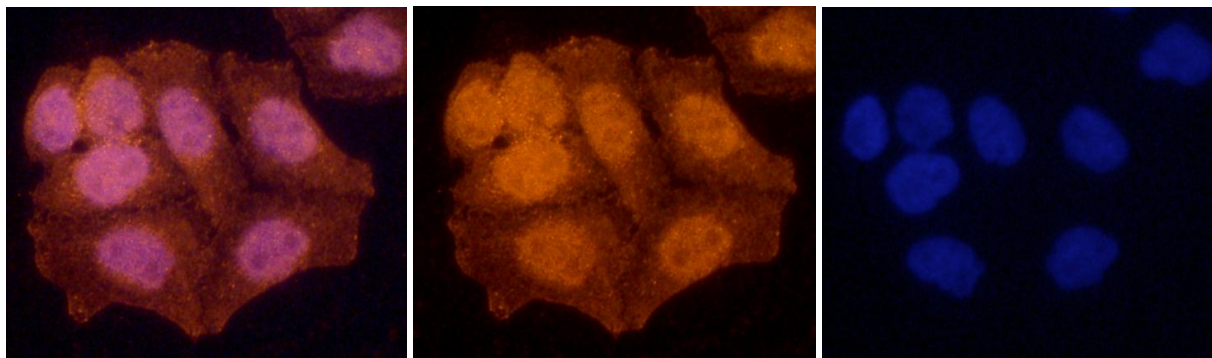


Fig. 2. Immunofluorescence (IF) analysis of JMJD2A in HeLa cells. Red, anti-JMJD2A; Blue, DAPI.