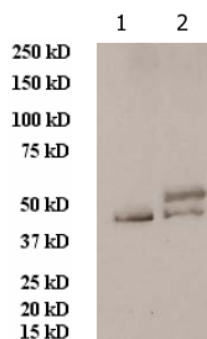


## Anti-NP (Measles Virus) Rabbit Polyclonal Antibody

CATALOG NUMBER: MeV-NP-0100, 100 µg

<b>Introduction</b>	Measles virus (MeV) is a single-stranded, negative-sense, enveloped (non-segmented) RNA virus of the genus Morbillivirus within the family Paramyxoviridae. Humans are the natural hosts of the virus
<b>Applications</b>	Western blot (1:200-1:1000) and ELISA, May be used for other applications.
<b>Description</b>	Rabbit polyclonal antibody of Measles virus nucleoprotein
<b>Immunogen</b>	<i>in vivo</i> expressed full length nucleoprotein (Measles Virus) (GenBank No. ABV69625).
<b>Specificity</b>	Reacts with NP protein from Measles Virus. Cross-reactivity not tested.
<b>Purification</b>	Immunoaffinity chromatography.
<b>Isotype</b>	IgG.
<b>Storage</b>	Store at -20 °C; Stable for 6-months from the date of shipment when kept at 4 °C. Non-hazardous. No MSDS required.
<b>Concentration</b>	2 µg/µl in PBS with less than 0.1% gelatin and 0.1% sodium azide.



**WB:**

- 1: 293 cell extract control
- 2: 293 cell expressing NP (Measles Virus)